

Hyperion HPx285

1536 x 1050 Imaging Array Size
6.45 μm Pixel Size

At 3.7 x 3.7 x 5 inches the Hyperion is a small camera with big camera capabilities. Each component of the Hyperion camera is designed and manufactured for a long life in the most demanding conditions. Hyperion download speeds are fast yet maintain the 16-bit resolution necessary to produce high quality images. Hyperion achieves a minimum of $\Delta 60^\circ\text{C}$ sustainable cooling without water assist. Simply set the Hyperion cooling where you want it and the camera will do the rest, quickly and without worries.



Hyperion with a Fast 45mm Shutter

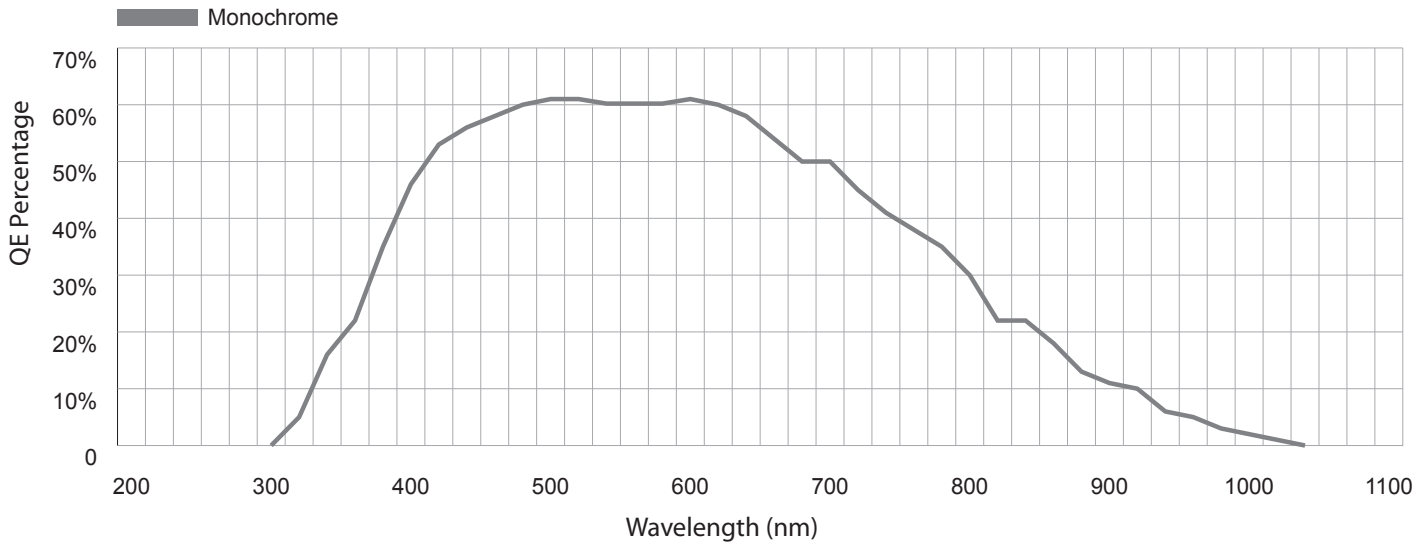
Applications

Digital Radiography	Gel Documentation
Astronomy	Forensic Imaging
Bioluminescence	Satellite Imaging
Chemoluminescence	Low Light Level Imaging

Features	Benefits
7 MHz Download Speed	Fast image capture with full 16-bit resolution
1434 x 1050 Array Size / 6.45 μm Pixel Size	Resolves fine detail
Flexible Binning and Readout	Increases frame rate
Thermoelectric Cooling to -60°C Below Ambient	Excellent low-noise imaging
Excellent Quantum Efficiency	High sensitivity
C-Mount and F-Mount Compatible	Offers a wide variety of optical choices
Acquisition Software	Supplied with camera and includes our open source SDK
USB 2.0 Interface	Industry standard connectivity, fast data transfer



HPx285 Quantum Efficiency



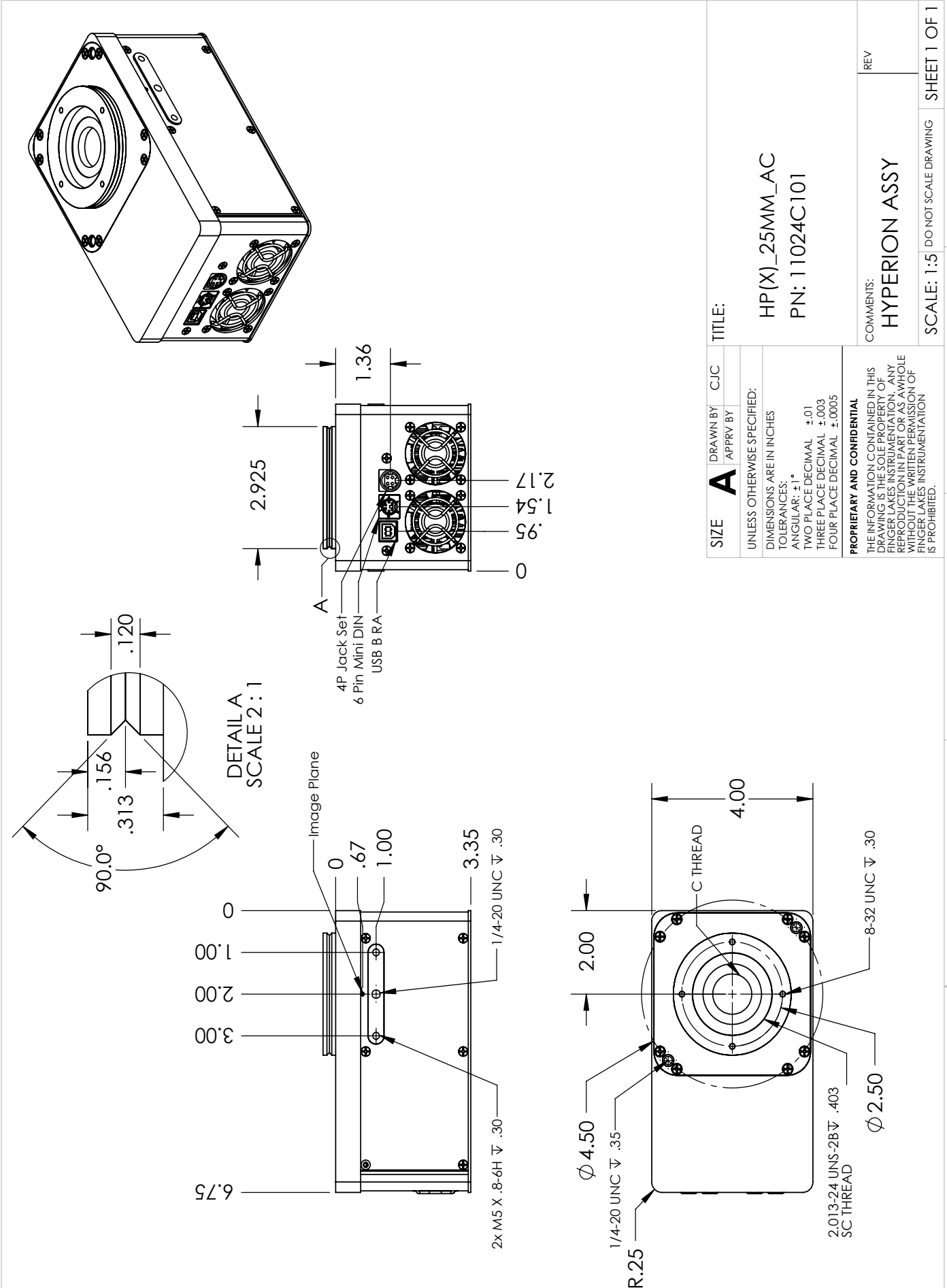
HPx285 Specifications	
Sensor	ICX285AL
Array Size	1434 x 1050
Pixel Size	6.45 μm
Typical Minimum Cooling	-60° C Below Ambient
Typical Download Speed @ 16-bit	7 MHz (other speeds available)
Typical System Noise	4.5 e- RMS @ 7 MHz
Nonlinearity	<1%
Temperature Stability	0.1° C
Operating Environment	-30° C - 45° C 10% - 90% Relative Humidity
Sensor Manufacturer	Sony
CCD Grades Available	Standard
CCD Type	Interline
Color/Monochrome	Monochrome
Mega Pixels	1.5
Sensor Diagonal	11.2 mm
Linear Full Well	18,000 e-
Typical Dark Current	<0.002 e-/pixel/sec. @ -35° C
Anti Blooming	Yes
Available Shutters (Optional)	25 mm (Sensor has a built in electronic shutter)
Shutter MTBF	1,000,000
Remote Triggering	Standard
Power	12v
Interface	USB 2.0
Dimensions	3.70 x 3.70 x 4.77 (94 x 94 x 121.3)

* Due to continuous development all specifications subject to change



Engineering Excellence
Because Your Image Depends On It

Air Cooled Hyperion with 25 mm shutter



SIZE	DRAWN BY	CJC
	APPROV BY	
UNLESS OTHERWISE SPECIFIED: DIMENSIONS ARE IN INCHES TOLERANCES: ANGULAR: ±1° TWO PLACE DECIMAL ±.01 THREE PLACE DECIMAL ±.003 FOUR PLACE DECIMAL ±.0005		
PROPRIETARY AND CONFIDENTIAL THE INFORMATION CONTAINED IN THIS DRAWING IS THE SOLE PROPERTY OF FINGER LAKES INSTRUMENTATION. ANY REPRODUCTION IN PART OR AS A WHOLE WITHOUT THE WRITTEN PERMISSION OF FINGER LAKES INSTRUMENTATION IS PROHIBITED.		
TITLE:		REV
HP (X)_25MM_AC PN: 11024C101		HYPERION ASSY
SCALE: 1:5 DO NOT SCALE DRAWING		SHEET 1 OF 1

